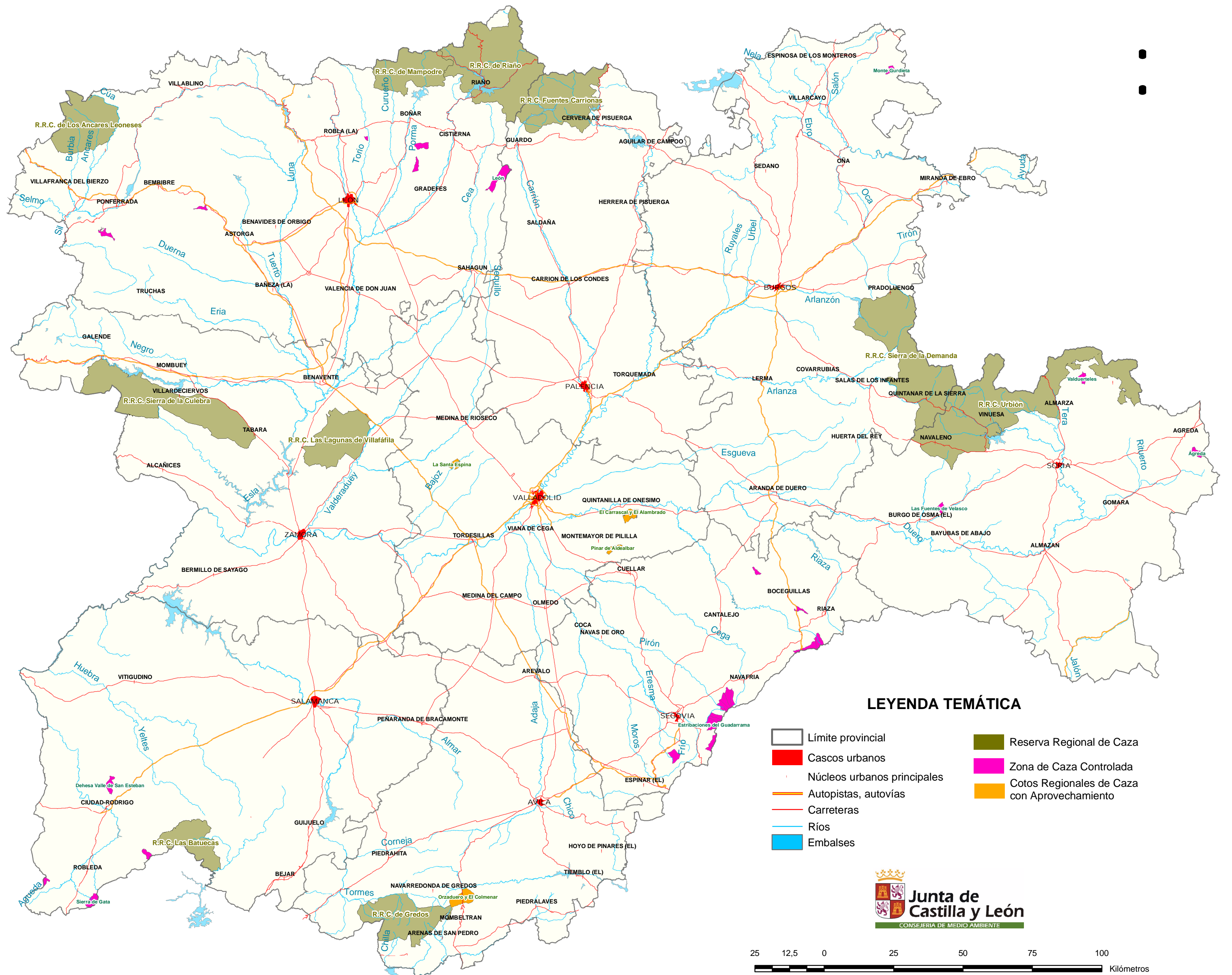










# TERRENOS CINEGÉTICOS



## LEYENDA TEMÁTICA

- |   |                             |   |  |
|---|-----------------------------|---|--|
|  | Límite provincial           |  | Reserva Regional de Caza                     |
|  | Cascos urbanos              |  | Zona de Caza Controlada                      |
|  | Núcleos urbanos principales |  | Cotos Regionales de Caza con Aprovechamiento |
|  | Autopistas, autovías        |   |  |
|  | Carreteras                  |   |  |
|  | Ríos                        |   |  |
|  | Embalses                    |   |  |

